
TELINK-SNMP2



User Manual
Volume 2

Appendix A Piani di montaggio, schemi elettrici, liste componenti / *Component layouts, schematics, bills of material*

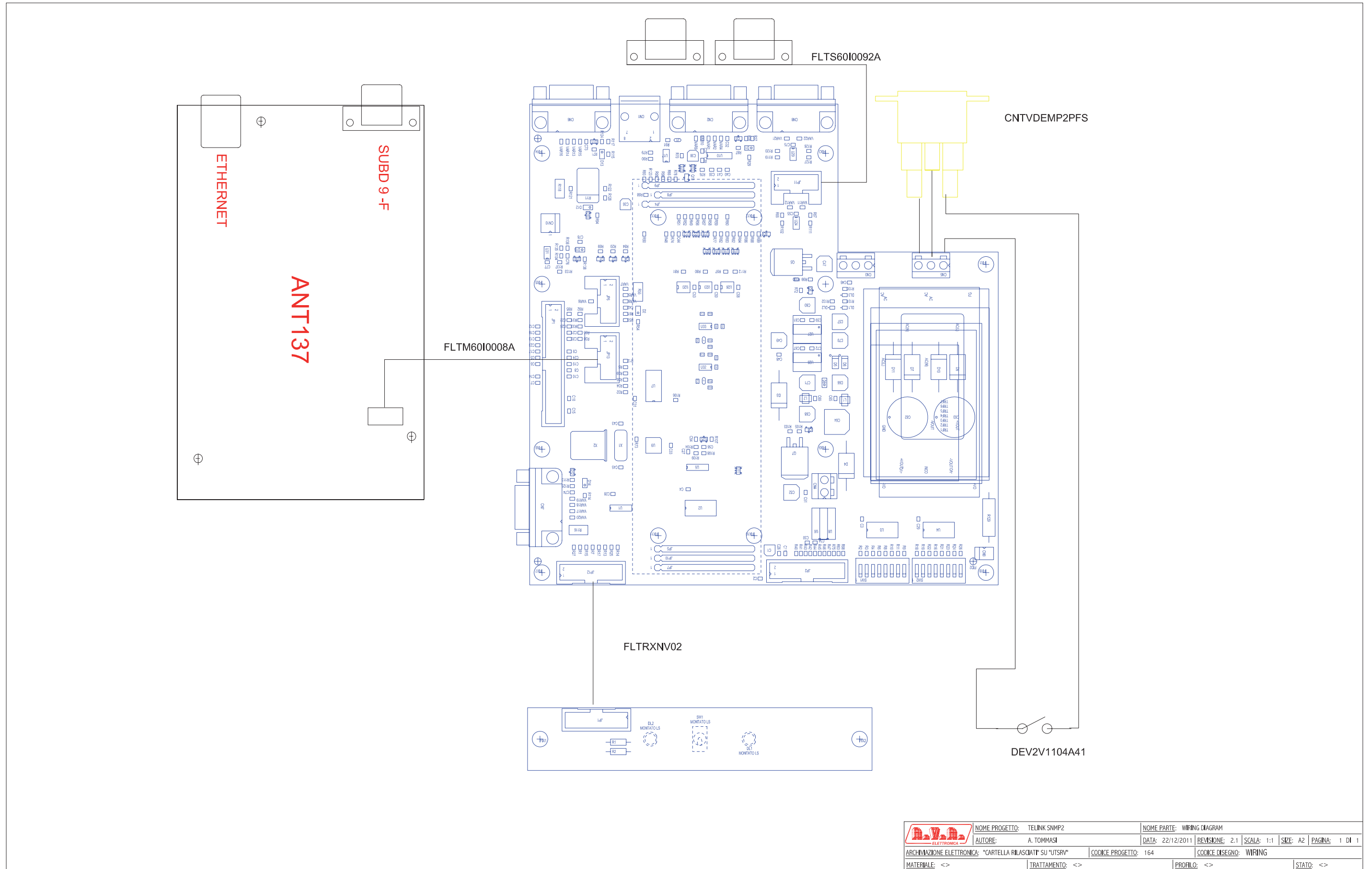
Questa parte del manuale contiene i dettagli tecnici riguardanti la costruzione delle singole schede componenti il TELINK-SNMP2. L'appendice è composta dalle seguenti sezioni:

This part of the manual contains the technical details about the different boards of the TELINK-SNMP2. This appendix is composed of the following sections:

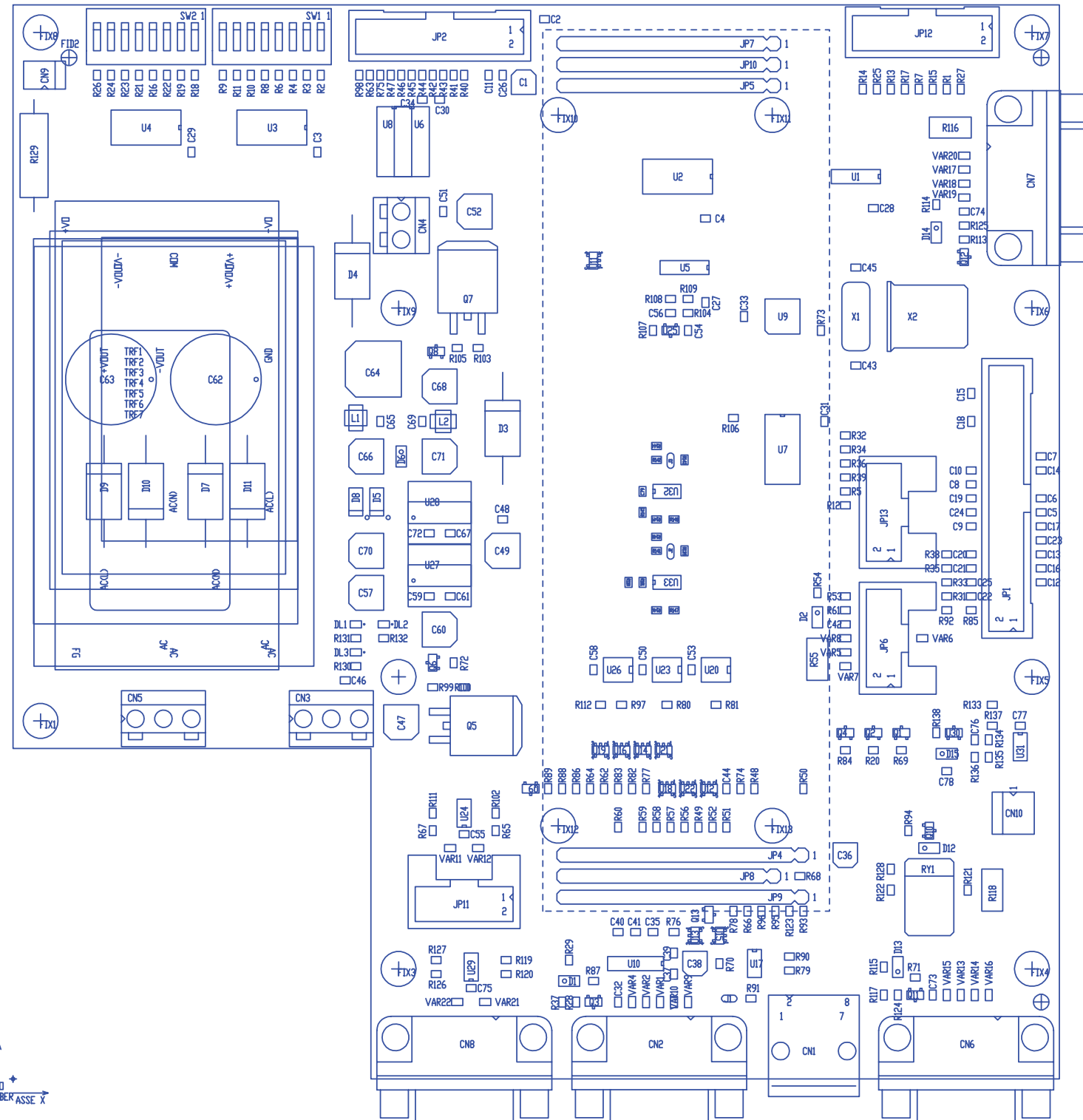
Description	RVR Code	Vers.	Page
Wiring diagrams	/	2.1	1
Main Board	SLIN0317R03V02	1.0	2
Panel Card	SLPC0347R01V01	1.0	5
16-bit CPU Card	SL034CP1001	1.1	7
SNMP ANTLAN card	TANT137		

Document History

Date	Version	Reason	Code	Editor
25/03/09	1.0	First Release in A3 Format	N.D.	J.H. Berti
07/02/2014	1.1	Major Upgrades	N.D.	J.H. Berti

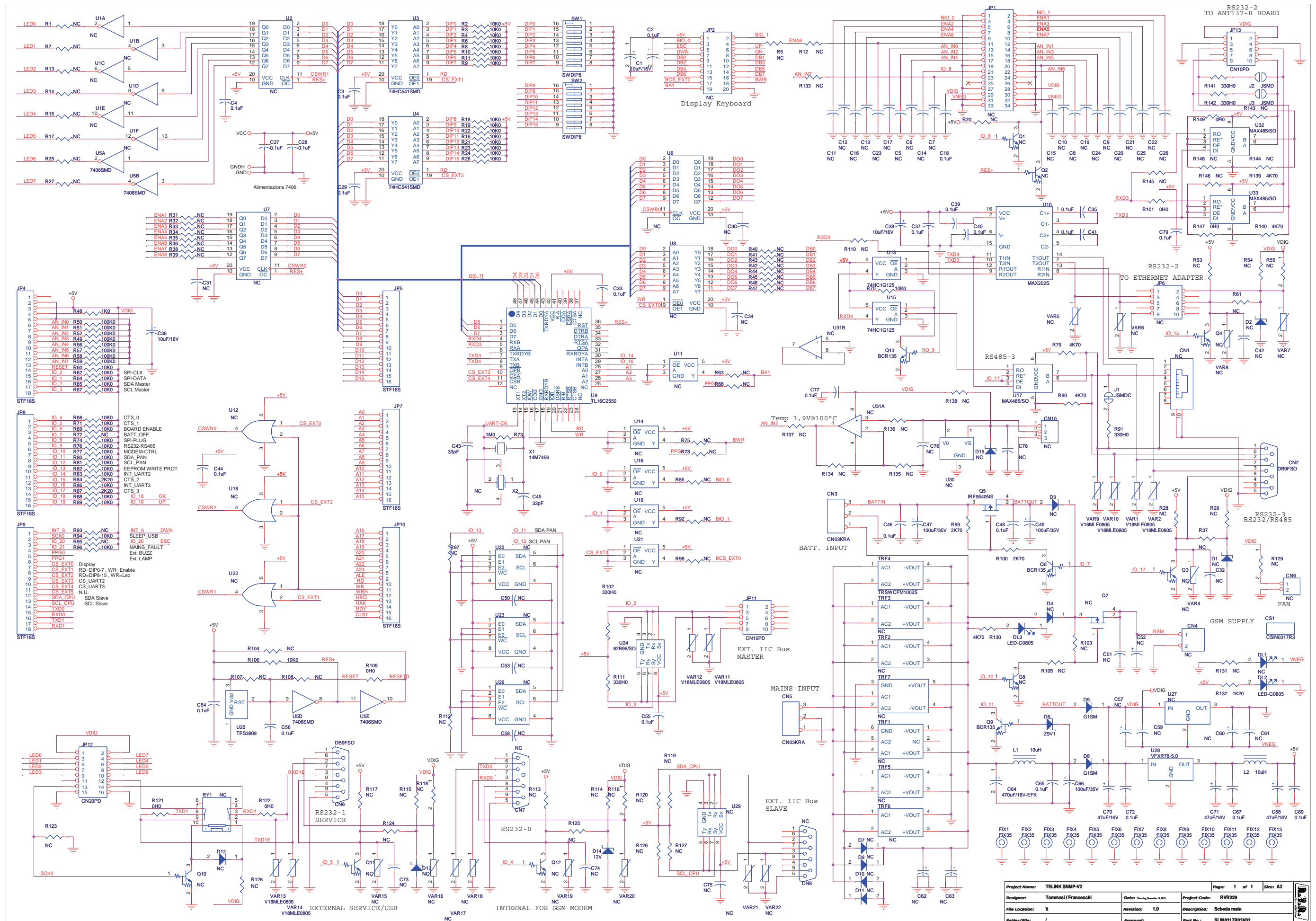


	NOME PROGETTO: TELINK SNMP2	NOME PARTE: WIRING DIAGRAM
	AUTORE: A. TOMMASI	DATA: 22/12/2011 REVISIONE: 2.1 SCALA: 1:1 SIZE: A2 PAGINA: 1 DI 1
ARCHIVIAZIONE ELETTRONICA: "CARTELLA RILASCIATI" SU "UTSRV"	CODICE PROGETTO: 164	CODICE DISEGNO: WIRING
MATERIALE: <>	TRATTAMENTO: <>	PROFILO: <>



ASSE Y
ZERO GERBER ASSE X

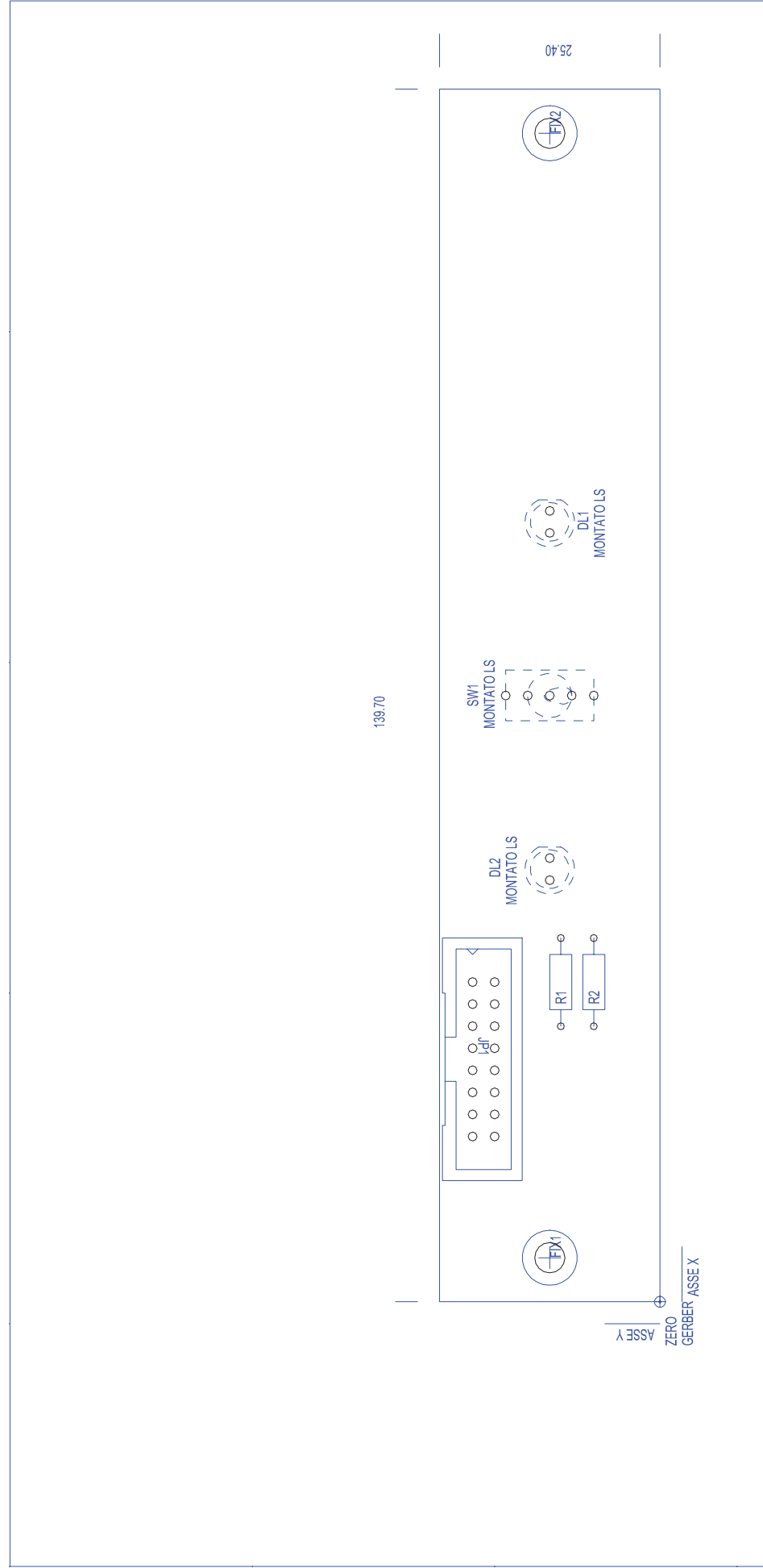
RILASCIO: 9/11/2011	DIS. S.POL. CTR. A2 LATO PIANO DI MONTAGGIO VISTA LATO COMPONENTI	
REV:		
DIM.SCHEDA: VEDI PROFILO TRATT.: STANDARD COSTRUTTORE	DENOMINAZIONE SCHEDA TLK-2010	
MAT.: FR4-74 1.6mm Cu35um 2 LAYER VISTA POSITIVA	CODICE CSIN0317R3	RVR ELETTRONICA S.P.A. SCALA 1:1



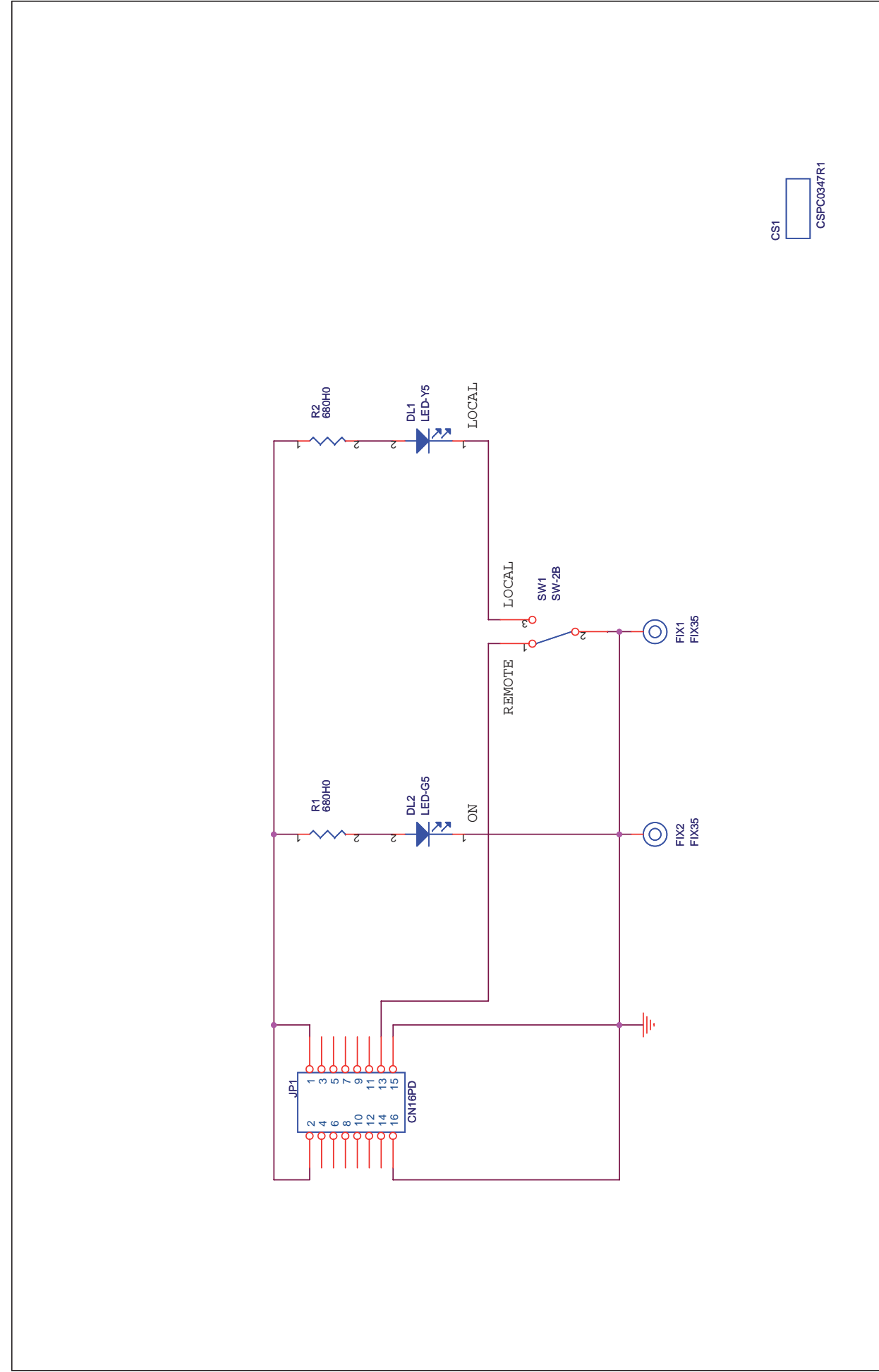
Project Name:	TELINK-SNMP-V2	Date:	10/02/2014	Page:	1 of 1	Size:	A2
Designer:	Tommasi / Franceschi	Project Code:	RVR229				
File Location:	%	Revision:	1.0	Description:	Scheda main		
Folder/File:	/	Approved:		Part No.:	SLIN0317R03V02		

Scheda main Revised: Thursday, November 14, 2013
SLIN0317R03V02 Revision: 1.0
TELINK SNMP-V2
RVR229
Tommasi / Franceschi

Item	Quantity	Reference	Part	Descrittio	Code						
1	1	CN1	NC	Connettore RJ45 da CS a 90°							
2	2	CN2,CN6	DB9FSO	Connettore DB9 femm. cs 90°	CNTDB9FCSA						
3	2	CN3,CN5	CN03KRA	Conn. tipo KRA a 3 poli	MORSKRA3	42	38	R2,R3,R4,R6,R8,R9,R10, R11,R16,R18,R19,R21,R22, R23,R24,R26,R60,R62,R64, R65,R67,R68,R69,R70,R71, R74,R76,R77,R80,R81,R82, R83,R86,R88,R89,R94,R96, R106	10K0	Res. SMD 0805	RCH085F0010K
4	1	CN4	NC	Conn. tipo KRA a 2 poli							
5	2	CN7,CN8	NC	Connettore DB9 femm. cs 90°							
6	1	CN9	NC	Connettore 2 poli Mascon							
7	1	CN10	NC	Connettore 3 poli Mascon							
8	1	CS1	CSIN0317R3	Circuito stampato	CSIN0317R3						
9	3	C1,C36,C38	10uF/16V	Cond. Elett. SMD d. 4mm	CES106A160						
10	25	C2,C3,C4,C18,C27,C28,C29, C33,C35,C37,C39,C40,C41, C44,C46,C48,C54,C55,C56, C65,C67,C69,C72,C77,C79	0.1uF	Cond. SMD 0805	CCC085104KXC	43	1	R48	1K0	Res. SMD 0805	RCH085F0001K
11	37	C5,C6,C7,C8,C9,C10,C11, C12,C13,C14,C15,C16,C17, C19,C20,C21,C22,C23,C24, C25,C26,C30,C31,C32,C34, C42,C50,C51,C53,C58,C59, C61,C73,C74,C75,C76,C78	NC	Cond. SMD 0805		44	8	R49,R50,R51,R52,R56,R57, R58,R59	100K0	Res. SMD 0805	RCH085F0100K
12	2	C43,C45	33pF	Cond. SMD 0805	CCC085330JCC	45	3	R55,R116,R118	NC	Res. SMD 2512 5%	
13	3	C47,C49,C66	100uF/35V	Cond. Elett. SMD d. 6.3mm	CES107E350	46	1	R73	1M0	Res. SMD 0805 1%	RCH085F0001M
14	3	C52,C57,C60	NC	Cond. Elett. SMD d. 6.3mm		47	5	R79,R90,R130,R139,R140	4K70	Res. SMD 0805	RCH085F004K7
15	2	C62,C63	NC	Cond. Elettr. Dia 16 P5 o 7.5		48	2	R84,R87	2K20	Res. SMD 0805	RCH085F002K2
16	1	C64	470uF/16V-EFK	Cond. Elett. SMD d. 10mm	CES477F160FK	49	5	R91,R102,R111,R141,R142	330H0	Res. SMD 0805	RCH085F0330H
17	3	C68,C70,C71	47uF/16V	Cond. Elett. SMD d. 6.3mm	CES476C160	50	2	R99,R100	2K70	Res. SMD 0805	RCH085F002K7
18	1	DL1	NC	LED Verde SMD 0805		51	6	R101,R109,R121,R122,R147, R149	0H0	Res. SMD 0805	RCH085F0000H
19	2	DL2,DL3	LED-G0805	LED Verde SMD 0805	LEDV0805	52	1	R129	NC	Res. 1W	
20	5	D1,D2,D13,D14,D15	NC	MINIMELF SMD Zener Diode		53	1	R132	1K20	Res. SMD 0805	RCH085F001K2
21	6	D3,D4,D7,D9,D10,D11	NC	Diode plastico DO201		54	2	SW1,SW2	SWDIP8	Dip switch 8 vie	DSW8VO
22	2	D5,D8	G1SM	MELF SMD Diode	DIS4007SMA	55	1	TRF1	NC	AC-DC Conv. 25W Serie TMS	
23	1	D6	Z9V1	MINIMELF SMD Zener Diode	DIZ9V1MINI	56	1	TRF2	NC	AC-DC Conv. 5W	
24	1	D12	NC	MINIMELF SMD Diode		57	1	TRF3	NC	AC-DC Conv. 5W	
25	13	FIX1,FIX2,FIX3,FIX4,FIX5, FIX6,FIX7,FIX8,FIX9, FIX10,FIX11,FIX12,FIX13	FIX35	Foro fissaggio 3.5mm		58	1	TRF4	TRSWCFM1002S	AC-DC Conv. 10W	MIBSWCFM1002S
26	1	JP1	NC	Connettore 34 poli Flat cs		59	1	TRF5	NC	AC-DC Conv. 15W	
27	1	JP2	NC	Conn.M.C.S.Dritto 20P alette		60	1	TRF6	NC	AC-DC Conv. 20W	
28	2	JP4,JP9	STF18S	Strip femmina 18 pin	CNTSTF18SDB	61	1	TRF7	NC	AC-DC Conv. 25W Serie TOM	
29	4	JP5,JP7,JP8,JP10	STF16S	Strip femmina 16 pin	CNTSTF16SDB	62	1	U1	NC	Hex inv OC SMD SO14	
30	1	JP6	NC	Connettore 10 poli Flat cs		63	3	U2,U6,U7	NC	Octal Latch SMD	
31	2	JP11,JP13	CN10PD	Connettore 10 poli Flat cs	CNTMCS10A	64	2	U3,U4	74HC541SMD	Octal buffer SMD	CID74HC541SM
32	1	JP12	CN20PD	Conn.M.C.S.Dritto 16P alette.	CNTMCS16A	65	1	U5	7406SMD	Hex inv OC SMD SO14	CID7406S
33	1	J1	JSMDC	Pad SMD a saldare chiuso		66	1	U8	NC	Octal buffer SMD	
34	2	J2,J3	JSMDC	Pad SMD a saldare		67	1	U9	TL16C2550	Dual FIFO Bus UART	CIDTL16C2550
35	2	L1,L2	10uH	Ind. verticale SMD dia. 4 p 4.8	IMP10USMS50V	68	1	U10	MAX202S	RS232 Driver SMD SO16	CIDMAX202CSE5
36	8	Q1,Q2,Q3,Q4,Q8,Q10,Q11, Q12	NC	Trans./Res. NPN SOT23		69	5	U11,U14,U16,U19,U21	NC	SOT23-5 Bus Buffer	
37	1	Q5	IRF9540NS	Trans. FET P D2PAK	TRNIRF9540NS	70	3	U12,U18,U22	NC	SOT23-5 OR Port	
38	3	Q6,Q9,Q13	BCR135	Trans./Res. NPN SOT23	TRNBCR135	71	2	U13,U15	74HC1G125	SOT23-5 Bus Buffer	CID74LVC1G125GV
39	1	Q7	NC	Trans. FET P D2PAK		72	3	U17,U32,U33	MAX485/SO	RS485 driver SMD SO8	CIDMAX485CSA
40	1	RY1	NC	Rele' TQ2		73	3	U20,U23,U26	NC	IIC Bus 512Kb EEPROM	
41	75	R1,R5,R7,R12,R13,R14,R15, R17,R20,R25,R27,R28,R29, R31,R32,R33,R34,R35,R36, R37,R38,R39,R40,R41,R42, R43,R44,R45,R46,R47,R53,	NC	Res. SMD 0805		74	1	U24	82B96/SO	IIC Bus driver SMD	CID82B96S
						75	1	U25	TPS3809	uP supply supervisor	CIDTPS3809
						76	1	U27	NC	Switching SIP3 regulator	
						77	1	U28	VFXR78-5.0	Switching SIP3 regulator	CILR785
						78	1	U29	NC	IIC Bus driver SMD	
						79	1	U30	NC	Temperature sensor	
						80	1	U31	NC	Dual Op. SMD SO8	
						81	8	VAR1,VAR2,VAR9,VAR10, VAR11,VAR12,VAR13,VAR14	V18MLE0805	ESD SMD protector	MOV018V085
						82	13	VAR4,VAR5,VAR6,VAR7,VAR8, VAR15,VAR16,VAR17,VAR18, VAR19,VAR20,VAR21,VAR22	NC	ESD SMD protector	
						83	1	X1	14M7456	Quarzo SMD HC49SMD	QRZ014M7456C
						84	1	X2	NC	Quarzo HC25 orizz.	



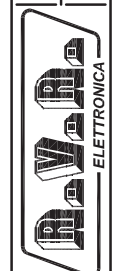
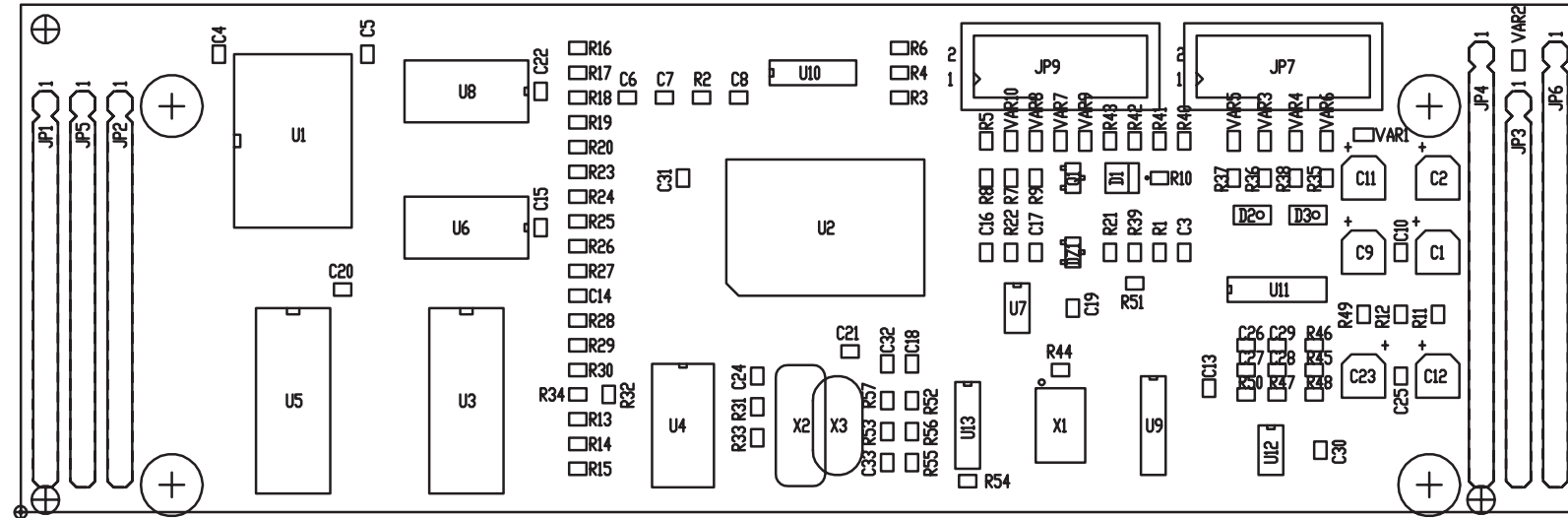
DATA RILASCIO:	31/10/11	DIS. S.POL.	
REV:		CTR. A2	
DIM.SCHEDA:	VEDI QUOTE	LATO PIANO DI MONTAGGIO	
TRATT:	STANDARD COSTRUTTORE	VISTA LATO COMPONENTI	
MAT:	FR4-74 1.6mm Cu 35um		
VISTA	POSITIVA		
DENOMINAZIONE	SCHEDA PANNELLO		
CODICE	CSPC0347R1	RVR ELETTRONICA S.P.A.	SCALA 1:1



Project Name:	Telink SNMP2v2	Page:	1 of 1	Size:	A4
Designer:	Tommasi A.	Date:	31/10/2011	Project Code:	RVR229
File Location:	\\	Revision:	1.0	Description:	Scheda Pannello
Folder/File:	/	Approval:		Part No.:	SLPC0347R01V01

Scheda Pannello Revised: Monday, October 31, 2011
 SLPC0347R01V01 Revision: 1.0
 A. Tommasi
 Telink SNMP2v2
 RVR229

Item	Quantity	Reference	Part	Description	Code
1	1	CS1	CSPC0347R1	Circuito stampato	CSPC0347R1
2	1	DL1	LED-Y5	LED Giallo dia. 5mm	LEDG05
3	1	DL2	LED-G5	LED Verde dia. 5mm	LEDV05
4	2	FIX1, FIX2	FIX35	Foro fissaggio 3.5mm	
5	1	JP1	CN16PD	Conn.M.C.S.Dritto 16P alette.	CNTMCS16A
6	2	R1, R2	680H0	Res. 1/4W 1%	RSM1/4F0680H
7	1	SW1	SW-2B	Deviatore da CS miniatura	DEV1V1103CSM



NOME PROGETTO: PTX-LCD

AUTORE: A. TOMMASI

NOME PARTE: 16 BIT CPU CARD

DATA: 12/02/2004 REVISIONE: 2.1 SCALA: 1:1 SIZE: A4 PAGINA: 1 DI 1

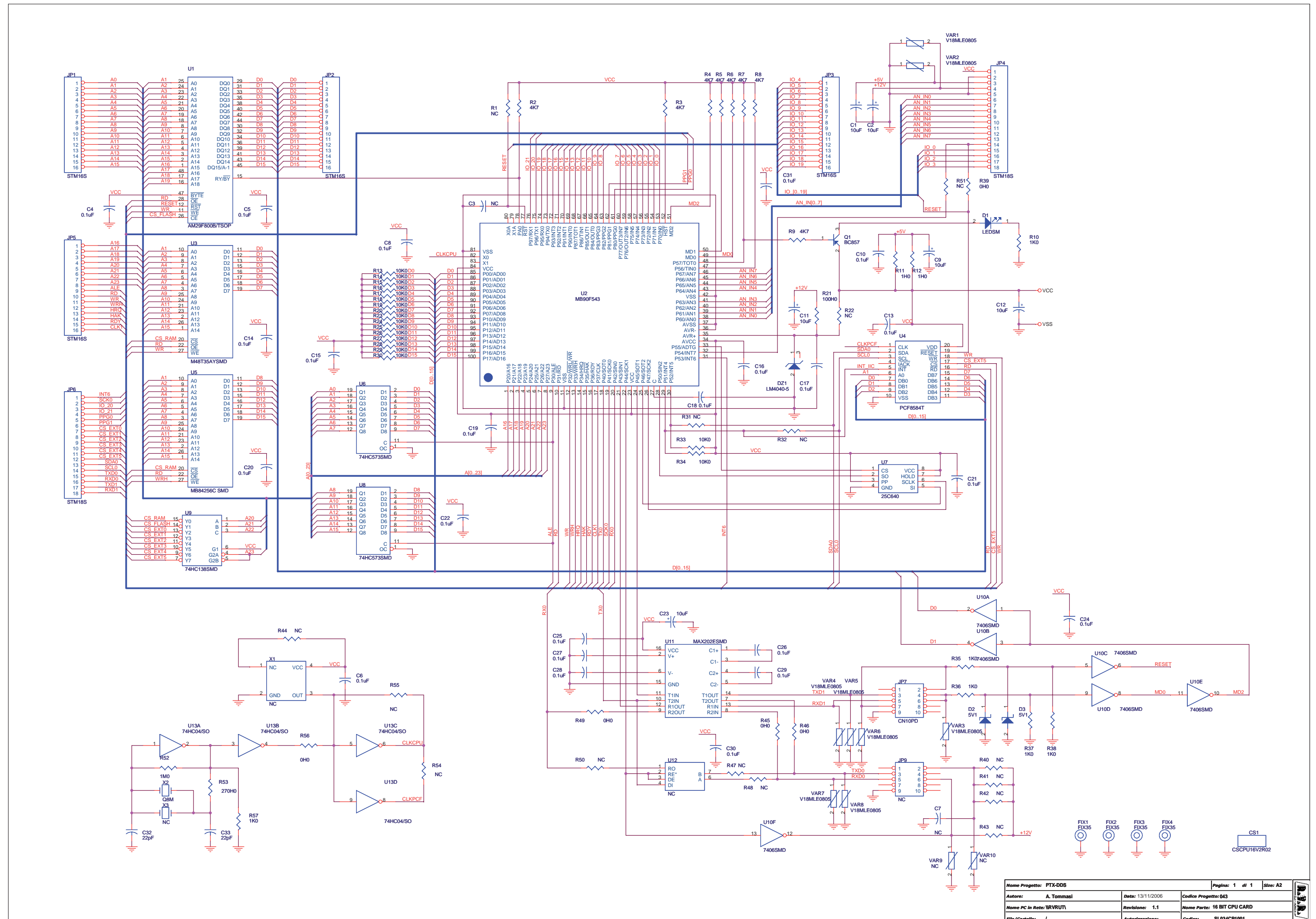
ARCHIVIAZIONE ELETTRONICA: \VRUT\

CODICE PROGETTO: RV021 CODICE DISEGNO: SL034CP1001

MATERIALE: FR4-74 1.6mm Cu 35um 4 LAYER

IRATTAMENTO:

STATO: ESECUTIVO



Nome Progetto: PTX-DDS	Pagina: 1 di 1	Size: A2
Autore: A. Tommasi	Data: 13/11/2006	Codice Progetto: 043
Nome PC in Rete: WVRUT1	Revisione: 1.1	Nome Parte: 16 BIT CPU CARD
File/Cartella: /	Autorizzazione:	Codice: SL034CP1001

16 BIT CPU CARD - SL034CP1001

Revision: 1.1 Date: 13/11/2006

PTX-DDS

034

A. Tommasi

Item	Quantity	Reference	Part	Description	Code
1	1	CS1	CSCPU16V2R02	Circuito stampato	CSCPU16V2R02
2	6	C1, C2, C9, C11, C12, C23	10uF	Cond. Elett. SMD d. 4mm	CES106A160
3	2	C3, C7	NC	Cond. SMD 0805	
4	23	C4, C5, C6, C8, C10, C13, C14, C15, C16, C17, C18, C19, C20, C21, C22, C24, C25, C26, C27, C28, C29, C30, C31	0.1uF	Cond. SMD 0805	CCC085104KXC
5	2	C32, C33	22pF	Cond. SMD 0805	CCC085220JCC
6	1	DZ1	LM4040-5	Diodi Zener SMD SOT23	CILLM4040-5
7	1	D1	LEDSM	LED SMD PLCC2	LEDRSMDPLCC2
8	2	D2, D3	5V1	MINIMELF SMD Zener Diode	DIZ5V1MINI
9	4	FIX1, FIX2, FIX3, FIX4	FIX35	Foro fissaggio	
10	4	JP1, JP2, JP3, JP5	STM16S	Strip maschio 16 pin	CNTSTM40SDC
11	2	JP4, JP6	STM18S	Strip maschio 18 pin	CNTSTM40SDC
12	1	JP7	CN10PD	Connettore 10 poli Flat cs	CNTMCS10A
13	1	JP9	NC	Connettore 10 poli Flat cs	
14	1	Q1	BC857	Trans. PNP SOT23	TRNBC857
15	15	R1, R22, R31, R32, R40, R41, R42, R43, R44, R47, R48, R50, R51, R54, R55	NC	Res. SMD 0805	
16	8	R2, R3, R4, R5, R6, R7, R8, R9	4K7	Res. SMD 0805	RCH085F004K7
17	6	R10, R35, R36, R37, R38, R57	1K0	Res. SMD 0805	RCH085F0001K
18	2	R11, R12	1H0	Res. SMD 0805	RCH085F0001H
19	18	R13, R14, R15, R16, R17, R18, R19, R20, R23, R24, R25, R26, R27, R28, R29, R30, R33, R34	10K0	Res. SMD 0805	RCH085F0010K
20	1	R21	100H0	Res. SMD 0805	RCH085F0100H
21	5	R39, R45, R46, R49, R56	0H0	Res. SMD 0805	RCH085F0000H
22	1	R52	1M0	Res. SMD 0805	RCH085F0001M
23	1	R53	270H0	Res. SMD 0805	RCH085F0270H
24	1	U1	AM29F800B/TSOP	Flash Eprom SMD TSOP48	CIDAM29F800B
25	1	U2	MB90F543	QFP100 SMD Microprocessor	CIDMB90F543
26	1	U3	M48T35AYSMD	RAM+RTC with Battery SMD	CIDM48T35Y7S
27	1	U4	PCF8584T	IIC Bus controller SMD	CIDPCF8584SM
28	1	U5	MB84256C SMD	RAM+RTC with Battery SMD	CID76C256
29	2	U6, U8	74HC573SMD	Octal Latch SMD	CID74HC573S
30	1	U7	25C640	Serial EEPROM SMD	CID25C640SN
31	1	U9	74HC138SMD	8 line decoder SMD	CID74HC138S
32	1	U10	7406SMD	Hex inv OC SMD SO14	CID7406S
33	1	U11	MAX202ESMD	RS232 Driver SMD SO16	CIDMX202ESDS
34	1	U12	NC	RS485 driver SMD SO8	
35	1	U13	74HC04/SO	Hex Inv. SMD SO14	CID74HC04S
36	8	VAR1, VAR2, VAR3, VAR4, VAR5, VAR6, VAR7, VAR8	V18MLE0805	ESD SMD protector	MOV018V085
37	2	VAR9, VAR10	NC	ESD SMD protector	
38	1	X1	NC	Osc. quarzo SMD	
39	1	X2	Q8M	Quarzo SMD HC49SMD	QRZ000008MC
40	1	X3	NC	Quarzo HC18	